

What?

Bill White

USDA, ARS Sugarcane Res. Unit

Houma, LA

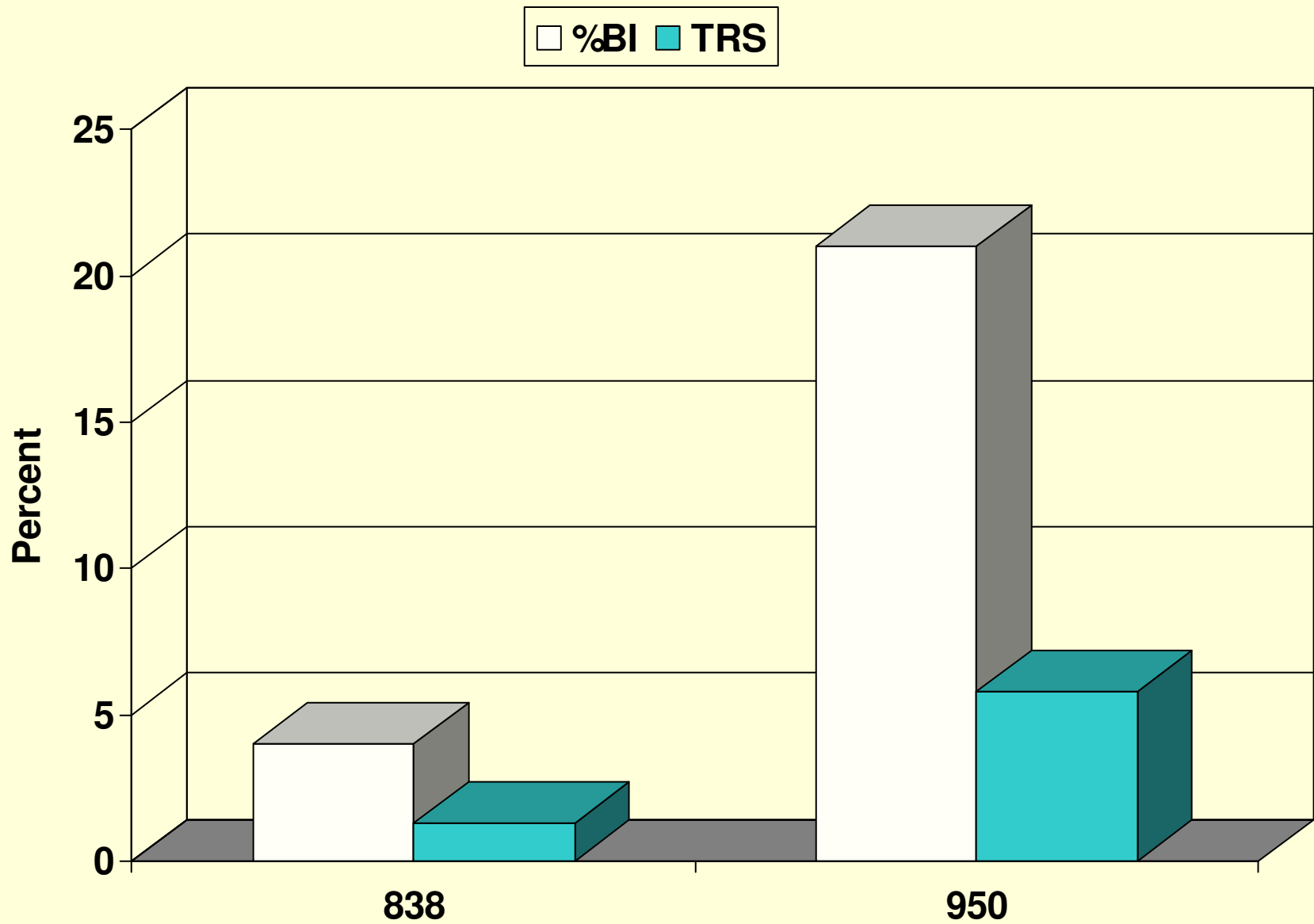
# Why?

Proceedings American Society of Sugar Cane Technologist. 1973. 2(NS)

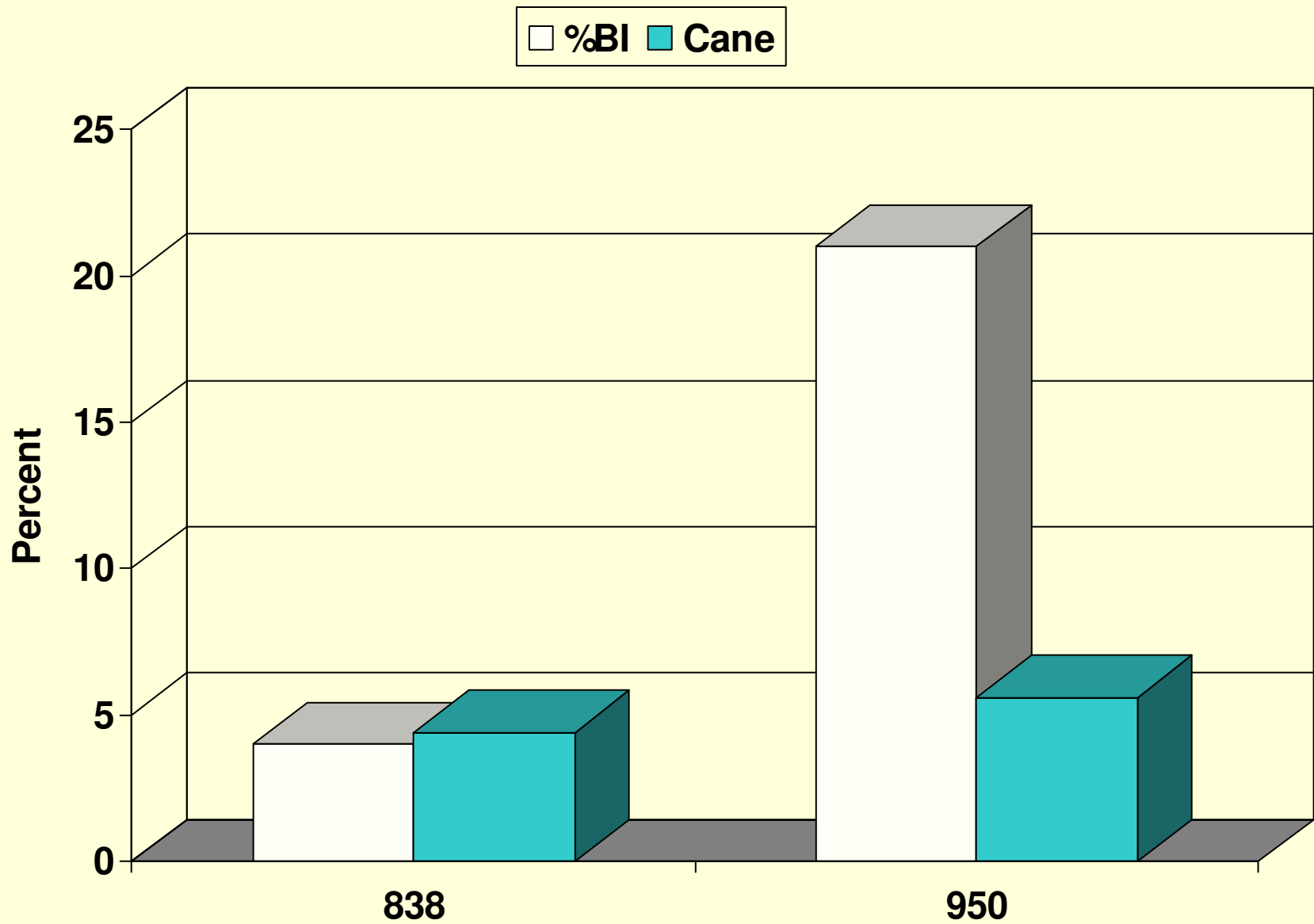
“This paper holds promise to be the least technical and scientific paper presented in the history of the ASSCT.”

**Objective** – Least technical and scientific paper presented in the history of the LATMC

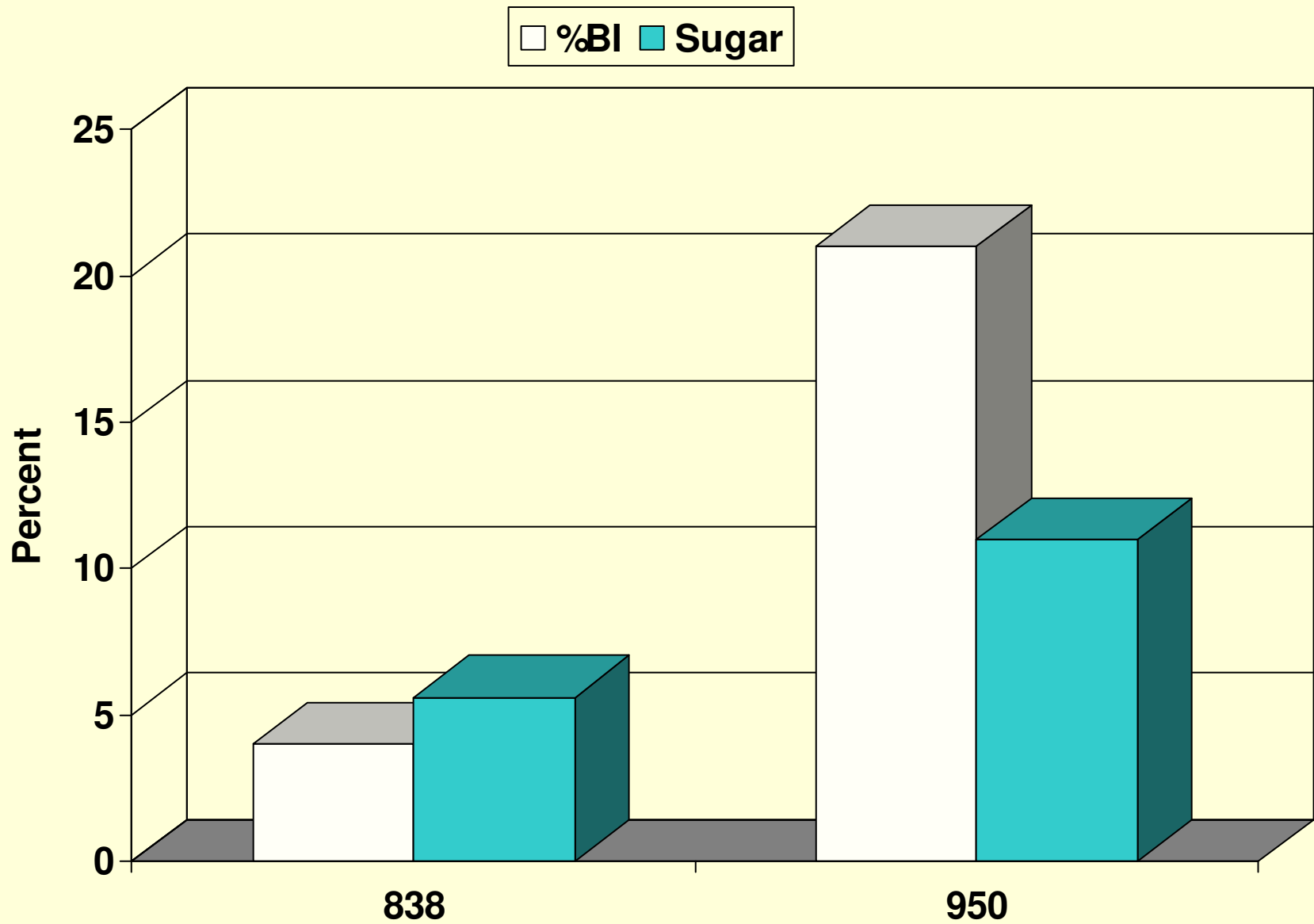
- Topics
  - HoCP 04-838
  - 2010 Yield Reduction Study
  - *Leptotrachelus dorsalis*



Reduction in TRS



Reduction in Cane



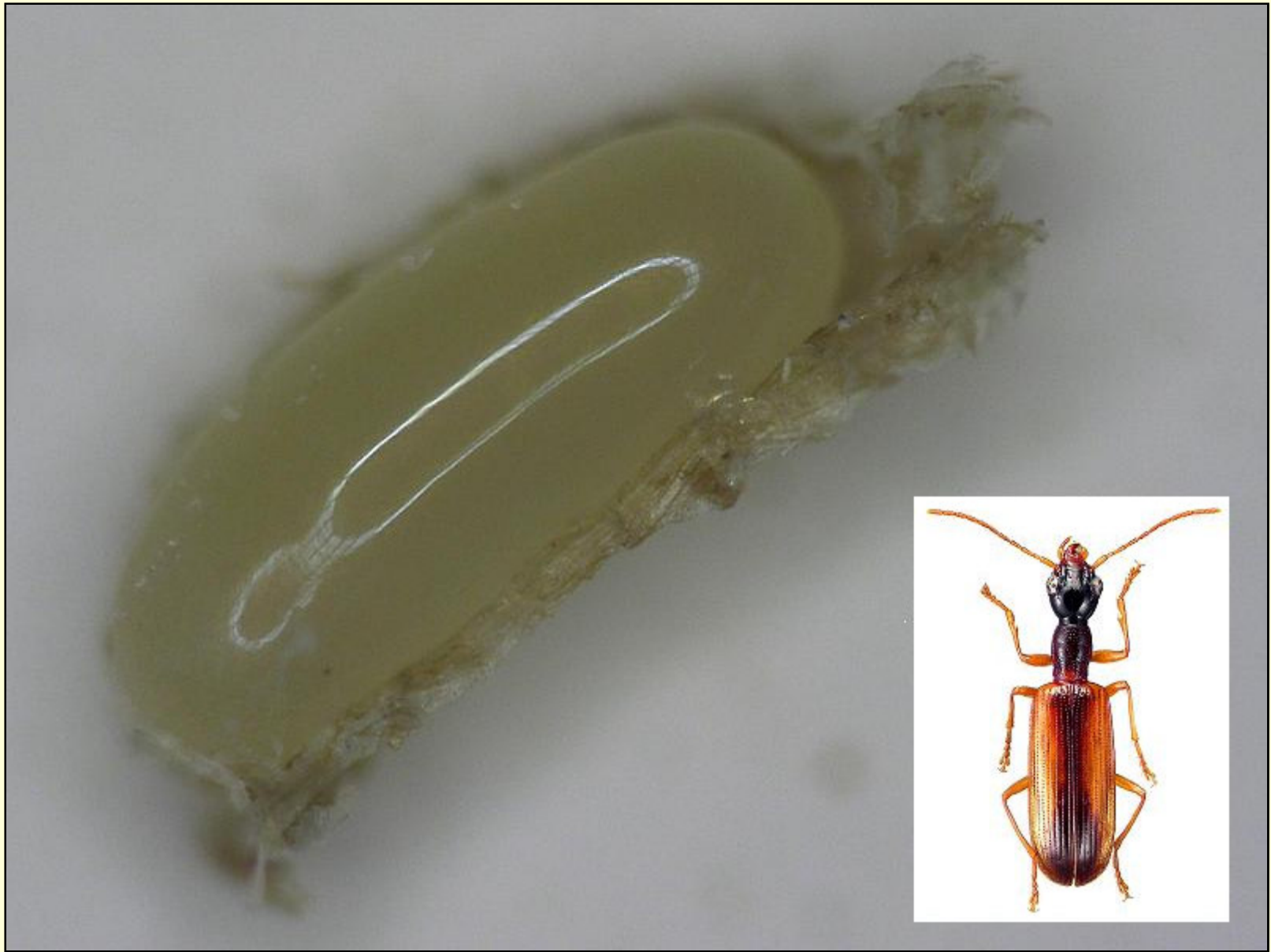
Reduction in Sugar

Variety	Percent Bored Joints
HoCP 00-950	29
HoCP 05-902 D	24
L 03-371	17
Ho 06-563 D	15
Ho 06-537 D	14
Ho 05-961 G	13
L 99-233	12
L 01-283	10
L 99-226	10
HoCP 04-838	6

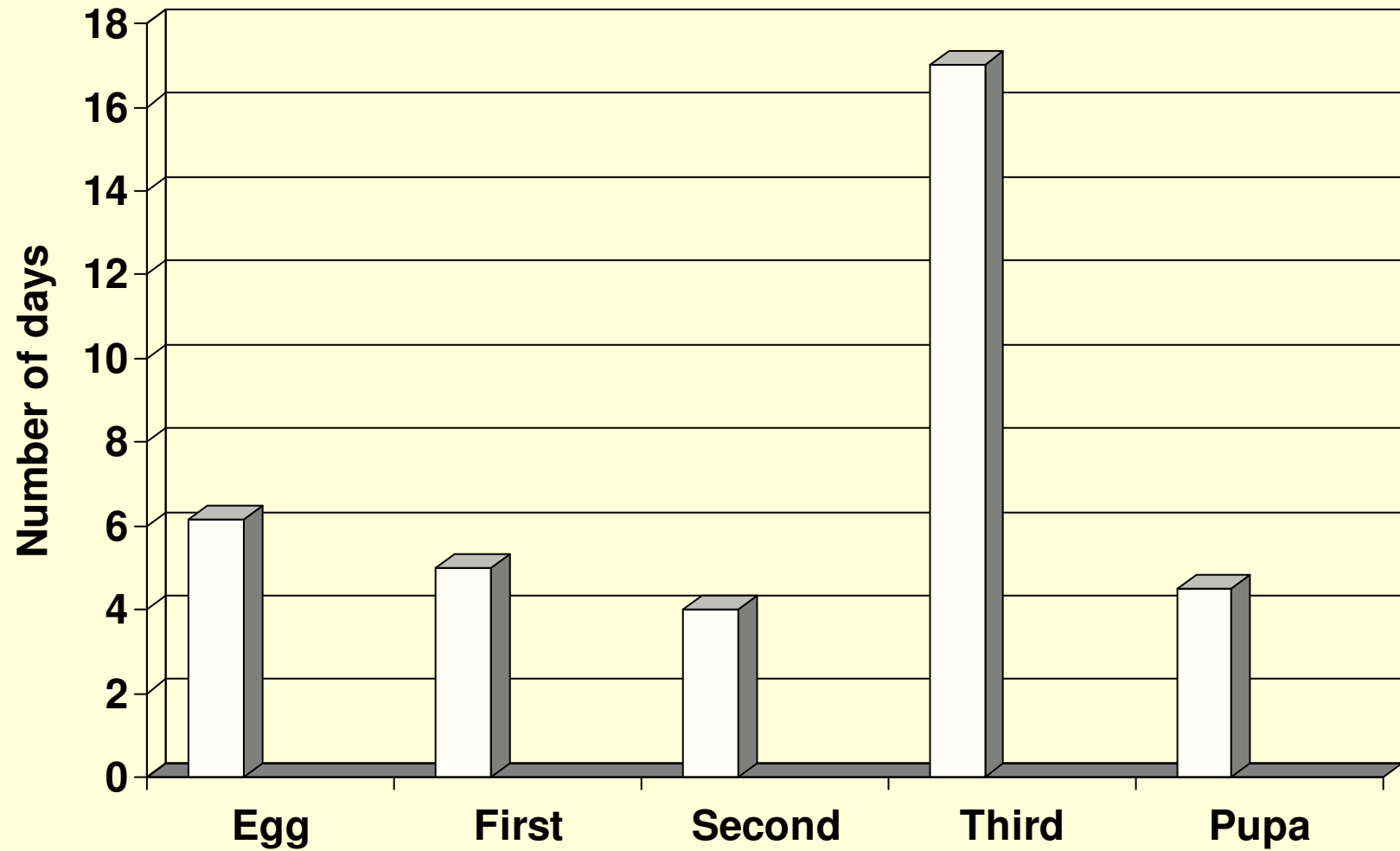


# HoCP 04-838

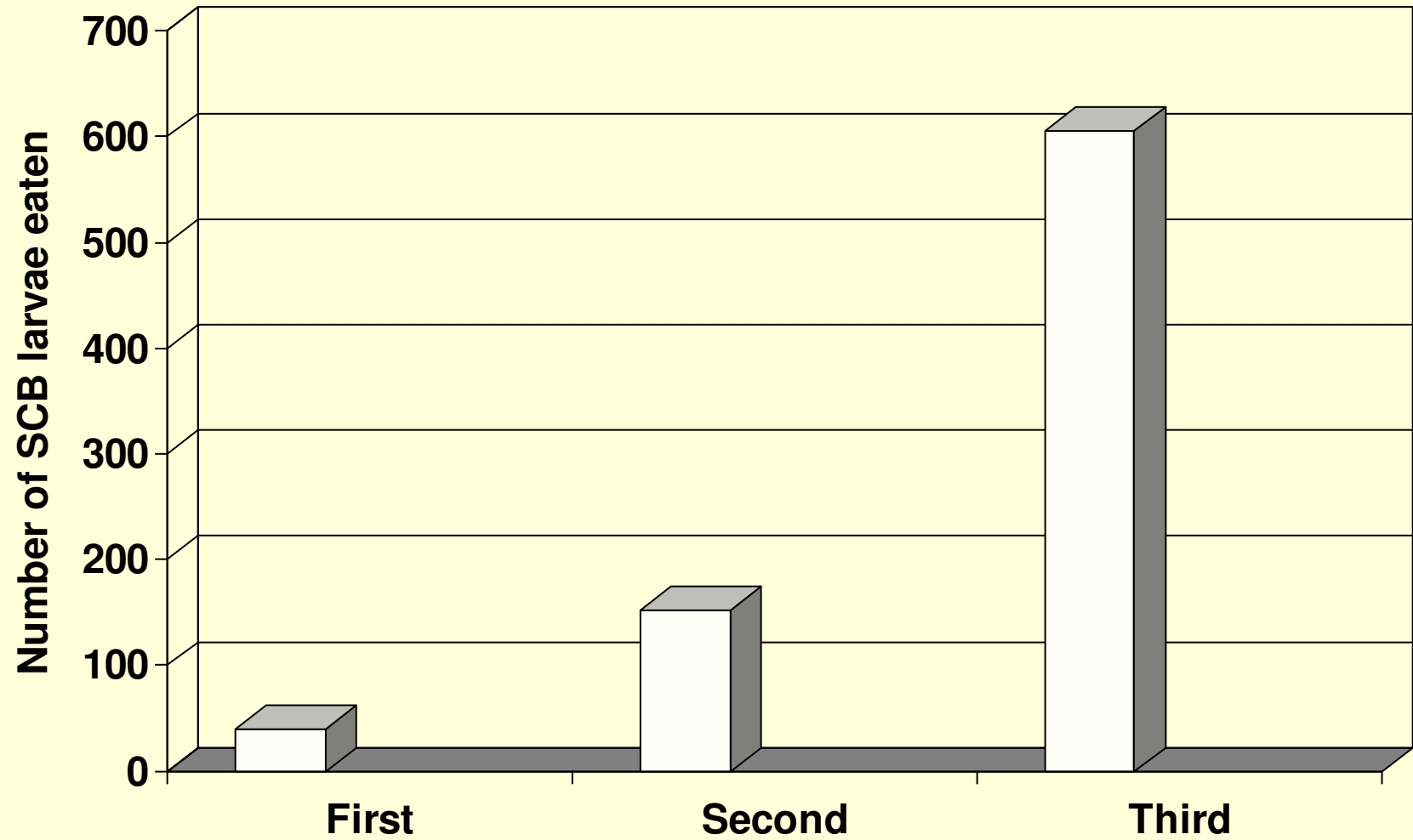
- Up for release this spring
- Negatives
  - Fiber
  - 540 level sugar
- Positives
  - Borer resistance
  - Disease resistance
  - Stubbles and harvests well
  - Cold tolerance\*\*



## Life stages and developmental time



## Larval voracity



# Plans for L.d. in 2011

- Publish our findings
- Investigate ways to increase presence in fields
  - Rear larvae collected during borer season
  - Hold these over the winter in diapause(?)
  - Release adults into cane last of May or first of June